

ent of
s maintained
re request
shall be
ents in

been
of the

do hereby
signed to
and

S OF
EAVES
(P. 221)

ALL HARRIS
IN D.B. 41, P. 399)

RAVEL ROAD
OTHERS

JOHN T. HARRIS, ET AL.
(D.B. 88 P. 14)

CONNIE SUE BAUGUCESS
(D.B. 151, P. 196)

50' WIDE ACCESS
EASEMENT FOR
INGRESS AND EGRESS
FROM SEC. RTE 145
TO LOTS 3, 4, AND 5.

10.279 AC.

9.793 AC.

13.053 AC.

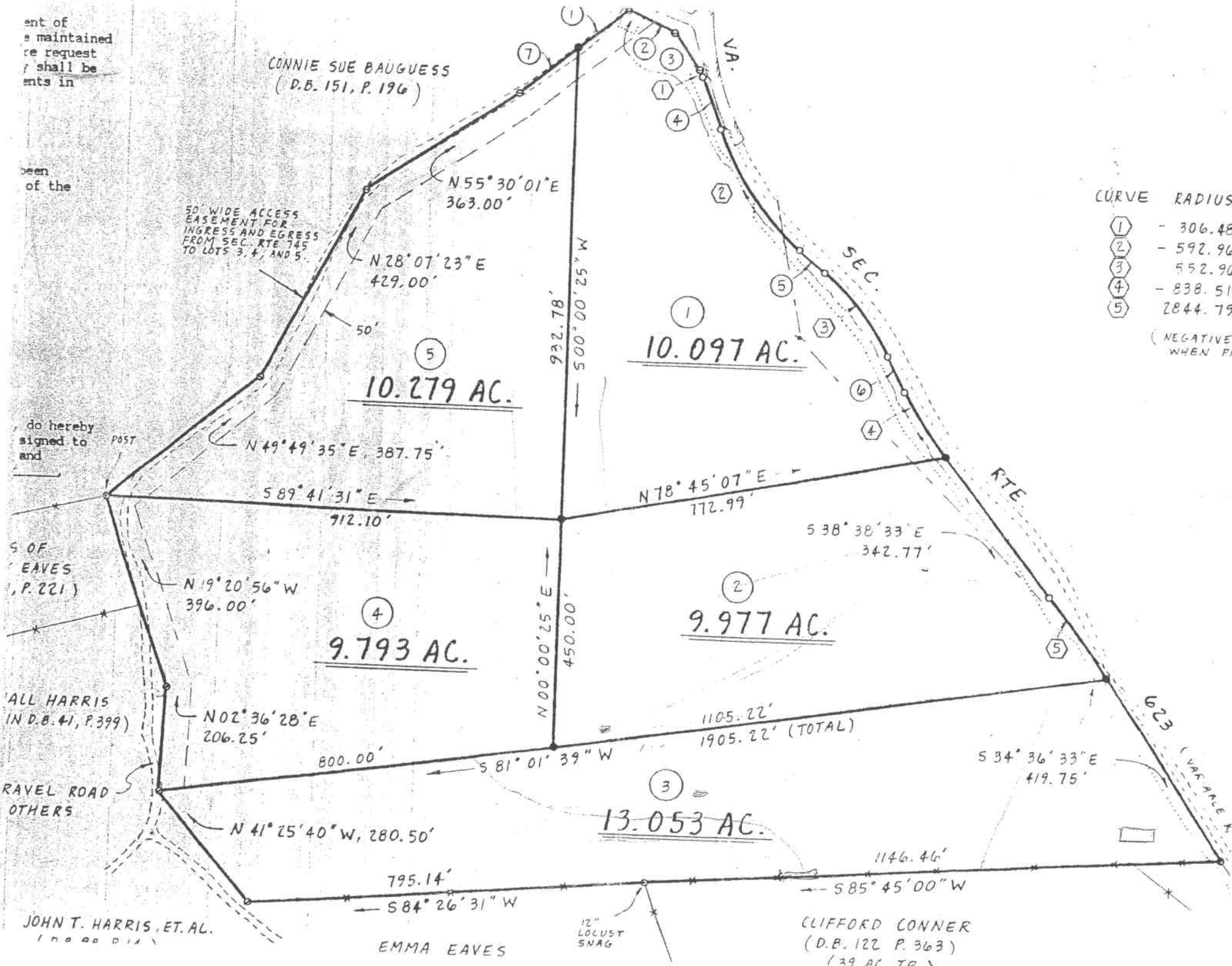
10.097 AC.

9.977 AC.

EMMA EAVES

12" LOCUST
SNAG

CLIFFORD CONNER
(D.B. 122 P. 363)
(39 AC TR)



CURVE	RADIUS
①	- 306.48'
②	- 592.96'
③	552.96'
④	- 838.51'
⑤	2844.79'

(NEGATIVE WHEN PR)

N 55° 30' 01" E
363.00'

N 28° 07' 23" E
429.00'

N 49° 49' 35" E, 387.75'

589° 41' 31" E
712.10'

N 19° 20' 56" W
396.00'

N 02° 36' 28" E
206.25'

N 41° 25' 40" W, 280.50'

795.14'
584° 26' 31" W

932.78'
500' 00" 25" W

N 00° 00' 25" E
450.00'

N 78° 45' 07" E
172.99'

S 38° 38' 33" E
342.77'

1105.22'
1905.22' (TOTAL)

800.00'
S 81° 01' 39" W

S 34° 36' 33" E
419.75'

1146.46'
585° 45' 00" W

623 (VA ACRES)